

# BELOVED

*ATL*



*2020*

IMPACT REPORT



# LOVED BY YOU.

## 2020 was a year wasn't it!?!

After leading BeLoved for eight years, I decided to go on my first sabbatical at the end of February. As you can imagine, it was cut short as the US began to shelter in place and I came back to one of the most interesting seasons at BeLoved.

Residents often have health conditions that make them high risk for COVID-19, and coupled with communal living, we made the tough decision to take the entire program virtual.

### **Our mission is built on the idea that community heals.**

We live life with one another and that entire dynamic changed overnight. The new guidelines we implemented to protect our community triggered past trauma for residents as they felt very controlled and unable to use their voice in setting daily routines.

Our staff quickly implemented new strategies which became our new normal for 2020.



There were lots of obstacles, grief, and tears but there were also deeper vulnerabilities, a greater understanding of how our individual actions affect us all, and a knowing of how much we need each other.

### **At BeLoved, we practice the skill of holding opposing beliefs at the same time.**

We ended the year tired and a little beat down, yet proud of all we accomplished.

In 2020, our community – **YOU** – continued to rally around and encourage us. Even when your life felt unstable, you kept pouring into others, kept donating and kept believing change is possible.

**Thank you!**

## ***"Our dream for next year is to build BeLoved's fourth residential home."***

Together we will continue to support more women escaping commercial sexual exploitation because if 2020 has taught us anything, it is that this community is strong, resilient and ready to take on the future.

**Yours truly,  
Amelia Quinn  
President**

*Atlanta*

# IT'S THE CITY!!!

**WHAT'S THE PROBLEM?**

**ADULT WOMEN ARE BEING SEXUALLY EXPLOITED. COMMERCIAL SEXUAL EXPLOITATION IS THE EXCHANGE OF SEXUAL ACTS FOR DRUGS, MONEY, FOOD, SHELTER, PROTECTION AND OTHER BASICS OF LIFE.**

- **SEX TRAFFICKING, PROSTITUTION AND ADULT ENTERTAINMENT ARE FORMS OF COMMERCIAL SEXUAL EXPLOITATION.**

**BUT SHE'S AN ADULT... SHE MADE HER DECISION.**

**87%**

**OF WOMEN IN PROSTITUTION WANT TO ESCAPE, BUT HAD NO OTHER MEANS OF SURVIVAL.**

**WHY SHOULD I CARE?**

**THIS IS OUR HOME. GEORGIA RANKS IN THE TOP 5 STATES WITH THE MOST CASES OF REPORTED HUMAN TRAFFICKING AND ATLANTA RANKS IN THE TOP 14 CITIES.**

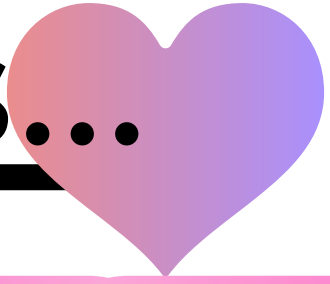
**BARRIERS THAT HOLD HER BACK FROM ESCAPING IN ATLANTA ARE ADDICTION, POVERTY, CRIMINAL BACKGROUND, CHILDHOOD TRAUMA, LACK OF EDUCATION AND MORE.**

**THE MORE YOU KNOW...**

---



# THE MORE IT SHOWS...



**LOVE**

**BELOVED ATLANTA WORKS WITH WOMEN OVER THE AGE OF 18 WHO HAVE EXPERIENCED COMMERCIAL SEXUAL EXPLOITATION, ADDICTION, AND HOMELESSNESS.**

**JOY**

**THE MAJORITY OF OUR REFERRALS ARE FROM CURRENT OR PAST RESIDENTS. THIS IS ONE OF HIGHEST TESTIMONIES TO THE PROGRAM.**

**PEACE**

**BELOVED EXISTS TO HELP EACH WOMAN MOVE FROM SURVIVAL TO A PLACE OF THRIVING.**

**PATIENCE**

**WE BELIEVE RESIDENTS SHOULD HAVE THE LOUDEST VOICE IN THE BELOVED PROGRAM.**

**KINDNESS**

**IT IS EACH WOMAN WHO BEST UNDERSTANDS HER RECOVERY JOURNEY.**

**GOODNESS**

**WE SEE HER EVERY DAY. SOMETIMES SHE MAKES IT, SOMETIMES SHE DOESN'T.**

**FAITHFULNESS**

**NO MATTER HER CHOICE, WE WALK WITH HER.**

**GENTLENESS**

**WE'RE HERE FOR HER.**

**SELF-CONTROL**

**\*RESULTS FROM THIS IMPACT REPORT ARE BASED ON RESIDENTS' PROGRESS, DIRECT INTERVIEWS AND ANONYMOUS SURVEYS OF BELOVED RESIDENTS.**



EXCLUSIVE



# *THE* *ART* **OF JOY**

WRITTEN BY: DAWN GRIER  
CASE MANAGER



As I reflect on the year 2020, the word double-edged comes to mind. 2020 was full of chaos, loss, and uncertainty, but it also held many moments of joy, laughter, and gratitude. In March of 2020, it was initially thought that we would be quarantining as an organization and working from home for just a short period.

### Oh, how Corona tricked us!

What I thought would be a short time of pivoting case managements, turned into us having to change how all programming and everyday duties would look.

### A lot of things shifted!

Transportation became what filled up my schedule the most, due to concerns of exposure to Coronavirus with utilizing Marta, in-person NA/AA meetings began to close, healthcare providers began to reschedule health appointments, and Intensive Outpatient Programs began to shut down before resuming virtually.

In a role that is so personable, we had to become creative to find ways to stay connected with the residents.

The everyday interactions with residents in our office shifted to only seeing the residents for transportation to health care providers, the grocery store, distributing medication, virtual zoom meetings, and case management. It was a hard transition to figure out ways to safely stay connected with one another.

*"In a role that is so personable, we had to become creative to find ways to stay connected with the residents."*

### What are in-person meetings even like anymore?

Limiting in-person interactions has been a challenge because it creates less time to connect with the residents, especially with building rapport with new residents.

It also becomes difficult when doing groups online rather than in person, you start to miss the personal connections and being able to hug or console someone in person if they are having a harder day.

And let us not forget the frustrations of internet connections on Zoom, the freezing, connections going in and out, etc.!

**However, with all the frustrations and challenges, there was joy in the midst.**

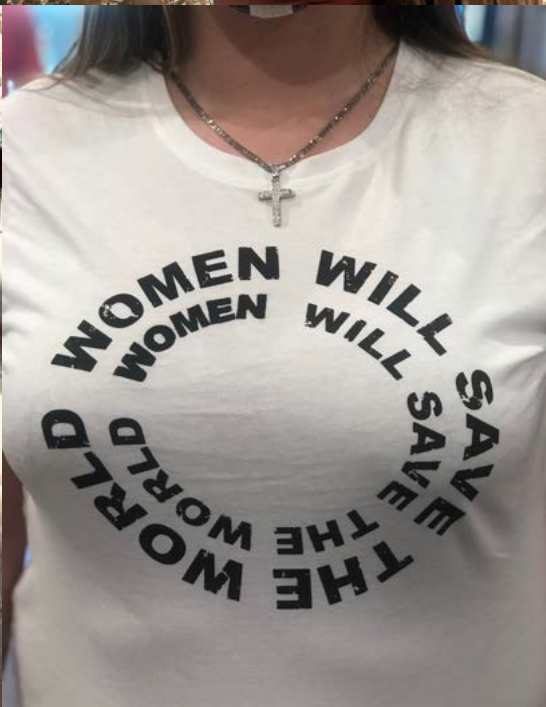
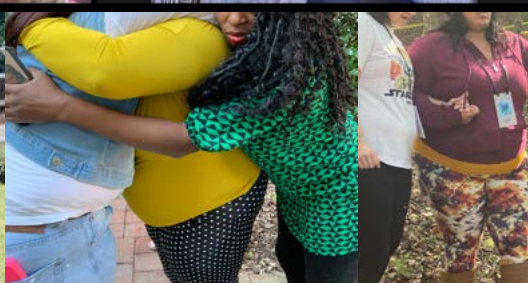
A few joys of 2020 included:

- being able to have community outings with residents and staff, and making memorable moments;
- working alongside, and witnessing two residents graduate from the BeLoved program,
- residents receiving interviews and employment amid a pandemic and
- seeing the residents evolve into better versions of themselves, despite the world seeming to crumble around them.

**All in all, 2020 was a chaotic year, but I would not have wanted to navigate through the beginning of a pandemic with any other organization.**









# PATIENCE GROWS

*"This year, our residents practiced more than ever, the art of sitting still. One resident said to me, "I am thankful for the pandemic, because I know I can be patient now."*



NIA BAKER, CLINICAL THERAPIST



TINA BRADY & KIARA BOYTON,  
EVENING & WEEKEND RESIDENTIAL MANAGERS

*In 2020, we added Kiara and Tina to the BeLoved team as Night & Weekend Managers. It was the perfect fit! They became a much-needed extension to the residents as family, friends, mentors and more!*

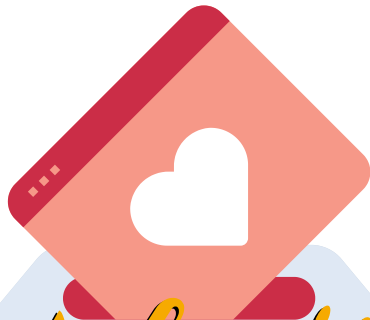
*"I cannot wait for the day that our staff and residents are back together in the office, but I am also thankful for a team that rolls with the punches and works hard to adapt to the needs of the moment."*



DEE HUMPHREY, CASE MANAGER



# KIND HEARTS



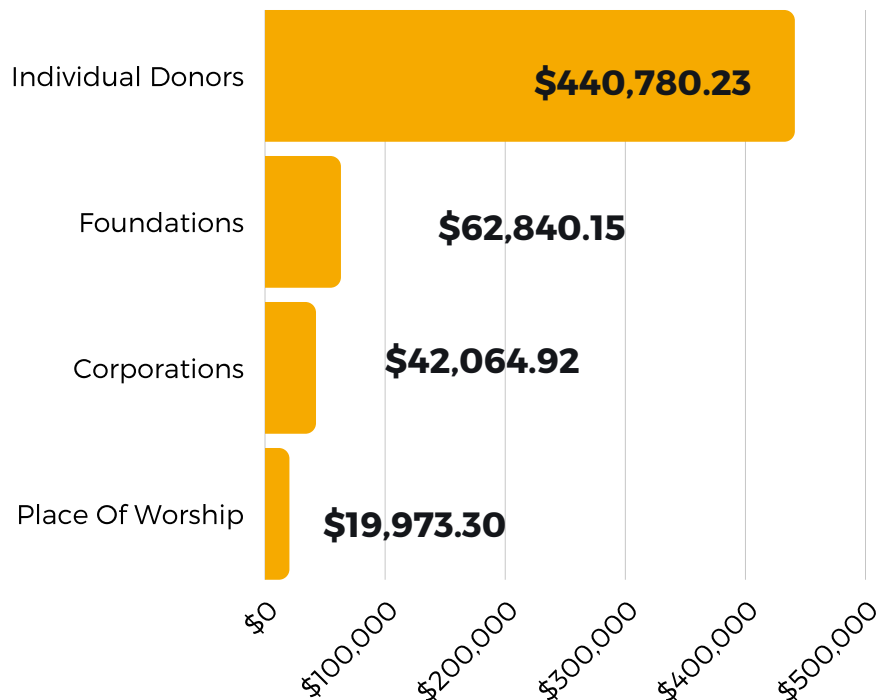
*total raised*  
**\$547,134.29**



**523**  
*donors*

*donations*  
**1,933**

- **AVERAGE GIFT SIZE: \$293**
- **120 MONTHLY DONORS GAVE \$11,000 EACH MONTH**
- **DONORS INCREASED FROM 407 IN 2019 TO 523 IN 2020**



# GOODNESS GRACIOUS

PROGRAM STATS



**10**  
*residents served*



**60%**  
*resident retention rate*



**69**  
*sobriety day celebrations*



**2**  
*program graduates*

One full-time employed, living in BeLoved transitional home.

One part-time employed, living in independent housing.

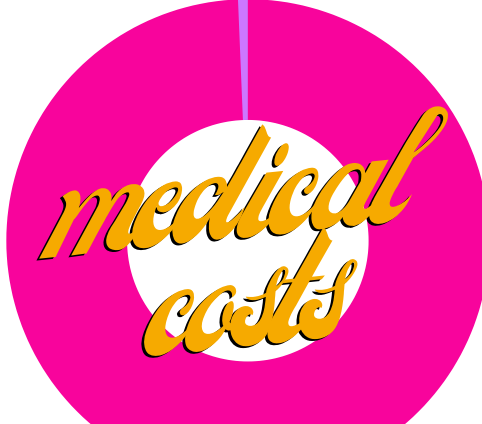
IOP\* **454.5**  
hours:

\*Intensive Outpatient Program

Counseling **586**  
Sessions:

**\$1,105.00**

Paid By Beloved  
0.7%



*medical costs*

**\$168,804.16**

Financial Assistance  
99.3%





# DISCIPLINE & SELF-CONTROL

## GRADUATE CB

"First and foremost I would like to thank God and BeLoved for giving me the opportunity to tell a little bit about myself. My name is CB by way of Nashville, TN. I made it to Atlanta, GA. where I was in a program named BeLoved Atlanta Inc. **Here is where I found myself and peace of mind.**

BeLoved is a program for women that have been commercially exploited and addicted to drugs. **I thank God that He sent me to the program because it provided me with housing, medical, personal needs and the opportunity to get my life together.**

I completed the program on December 28, 2020, now God and my supportive family helped me to transition into my own apartment.

Being in BeLoved for two years of structure, **I have to tell myself that I am not in a program anymore.** I can live the way I see fit for the lifestyle that I desire. I just want to thank God and BeLoved Atlanta Inc. for the opportunity for A New Beginning."

## A FAITHFUL JOURNEY

### GRADUATE SS

**"It's crazy to think about who I was when I started and who I am now. It's even more crazy and amazing when you can't even recognize yourself!** And it's all because of the people who said yes. I'm not the easiest person to get along with. I am a challenge, but they fought for a relationship with me. **They fought for ME!** What the people who partnered with BeLoved saw in me, changed my capacity to receive love.

We come out of a lifestyle where we're not seen as being human or as worthy of a chance and the moment you allow God to use you to see us and to help us, changes our lives forever. **I am proud of myself for going through this process.** I couldn't have done this without surrendering and it's not easy for me to surrender. Now I'm able to feel my own strength and that is a gift.

If you come out of a lifestyle like this and you make it to the "other side", you are stronger than you ever even imagined. **I am most proud that through it all, I found a way to hold on to what I knew God promised me.**

---

# A PEACEFUL PROCESS

**PHASE 1:**

*Restoration*

**PHASE 2:**

*Education*

**PHASE 3:**

*Employment*

**AT THE END OF THE  
PROGRAM, SHE GRADUATES  
AND...**

## **SHE IS:**

- **INDEPENDENT AND SELF-SUFFICIENT**
  - **SURROUNDED BY HEALTHY COMMUNITY**
  - **SOBER AND HAS OVERCOME ADDICTION**
  - **LOVED AND VALUED BY HER COMMUNITY**
  - **FINANCIALLY, SPIRITUALLY AND PHYSICALLY HEALTHY**
  - **IN RELATIONSHIP WITH CHILDREN, FAMILY, AND FRIENDS**
  - **ON AN EDUCATION AND CAREER PATH SHE IS EXCITED ABOUT**
  - **NO LONGER LIVING IN THE PAIN OF TRAUMA AND ADDICTION**
  - **DREAMING ABOUT THE FUTURE INSTEAD OF SURVIVING THE MOMENT**
-



# BELOVED STAFF



Laura Hamilton



Faithe



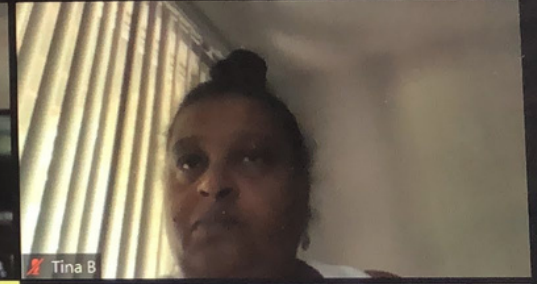
Dee Humphrey



Amelia Quinn



Michelle Hoeft



Tina B



Dawn



Nia Baker



Kiara Boynton



*Program Director*  
LAURA HAMILTON

*Communications Coordinator*  
FAITHE DENNIS

*Case Manager*  
DEE HUMPHREY

*President*  
AMELIA QUINN

*Vice President*  
MICHELLE HOEFT

*Weekend Residential Manager*  
TINA BRADY

*Case Manager*  
DAWN GRIER

*Clinical Therapist*  
NIA BAKER

*Evening Residential Manager*  
KIARA BOYNTON





CATHY PRICE, LAURA HAMILTON, AMELIA QUINN  
POSE AT THE FIRST 2020 GRADUATION

# A GENTLE APPROACH

## CATHY PRICE - BELOVED BOARD MEMBER

2020 has presented each of us with an opportunity to think creatively about how we celebrate loved ones and stay connected to our community.

**The realities of COVID-19 have caused us to trade-in lively parties with friends and family for awkward video calls and outdoor gatherings in which the only dress code requirement is a mask.**

For some, this necessary shift in social behavior has yielded a more subdued celebration of life's key milestones. Birthdays, anniversaries and graduations in 2020 didn't seem to embody the same level of joy. Thankfully this was NOT the case for the BeLoved Community!

Throughout 2020, the BeLoved community continued to fearlessly pursue their fullest potential and relentlessly encourage one another along the way. **This is what it means to be a community of restoration!**

This Fall, I had the opportunity to witness them in action at a celebration for a Program graduate. We gathered in a pavilion at a local park. We all wore masks and resisted the urge to greet each other with hugs.

Despite the restrictions COVID mandated, the celebration was anything but restrained. **The social distancing requirements couldn't subdue their love for each other; the masks couldn't muffle the empowering words of love, affirmation and encouragement.**

# BOARD OF DIRECTORS



Melody Bray

BT Harman

Cathy Price



TC Whitaker

Kim Shriver

Jon Smith



Martie Hendrick

Micheal Calloway

Brad Mauldin

Our Board helped us effectively transition from in-person to a virtual program.





# COMMUNITY PARTNERS



ST. JUDE'S RECOVERY CENTER, INC.



URBAN HEALTH  
& WELLNESS



PEACHTREE ROAD  
UNITED METHODIST CHURCH  
ATLANTA



# GET INVOLVED!

Donate

Volunteer

Visit Our Amazon Wishlist

Sign up for our newsletter

Follow us on social media

